



**In this Fall 2021 newsletter:**

**In the Field: Oyster Castle Reefs**  
**Coming soon - New features in Domino**  
**Our Distributors**  
**Battery Replacement**  
**Happy Holidays!**

**IN THE FIELD:**

**Monitoring Water Direction and Speed behind Oyster Castle® Reefs on Nantucket**

The Nantucket Conservation Foundation and the Town of Nantucket Natural Resource Department had a challenge to find a way to reduce wave and tide impacts at the Medouie Creek salt marsh in Polpis Harbor while hoping to improve the ecological health of the marsh and the harbor.

Their solution – Oyster Castles! Oyster what?! The Oyster Castle reef concept is fairly new to Massachusetts. The lego-like castle blocks are made by [Allied Concrete](#) with a proprietary concrete mix that will not only form a barrier to slow down the water velocity but will also attract baby Oysters or Oyster spat. Oyster spat need a solid structure to attach to and once attached they grow and mature and produce more babies, building up an oyster reef. But without that harder structure to attach too, oysters won't move into an area.



Dr. Jen Karberg, the Research Program Supervisor with the Nantucket Conservation Foundation, has been using Lowell Instrument's TCM-4 shallow water tilt current meters to monitor the existing conditions and will provide continuous long-term data to see how the reef changes water direction and speed around the salt marsh. The TCM-4 which is designed to operate in less than 1 foot of water is ideal for measuring water velocity in shallow coastal ponds, bays, rivers and tidal flats.

For the complete story and more photos be sure to check out [Jen's blog](#) or the "In the Field with Neil" [video/interview](#) with Jen and her team in the water.



*Do you have photos of our Tilt Current Meters in action? Please send us a photo of our meters in the field and tell us about your research...and we will send you one of our Lowell Instruments T-shirts. Please email: [scott@lowellinstruments.com](mailto:scott@lowellinstruments.com).*

## Coming SOON! New Features in Domino Software

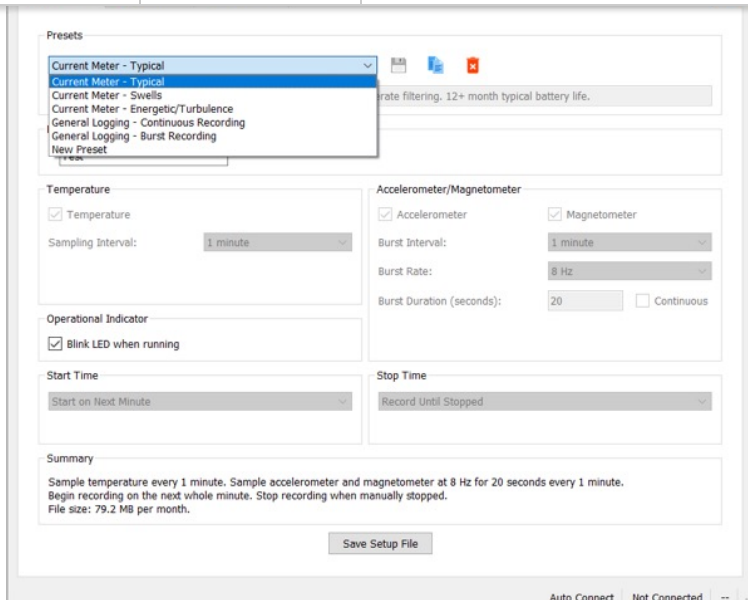
Presets and new Delayed Start options will be added to the Domino software to help streamline your deployments.

### Presets

The new presets are 5 of the most common deployment configurations. The best part is, you can create and save your own configurations for future use. When you select a preset this will automatically set your temperature channel's sampling interval, the accelerometer & magnetometer's burst interval, burst rate and burst duration and your start and stop times.

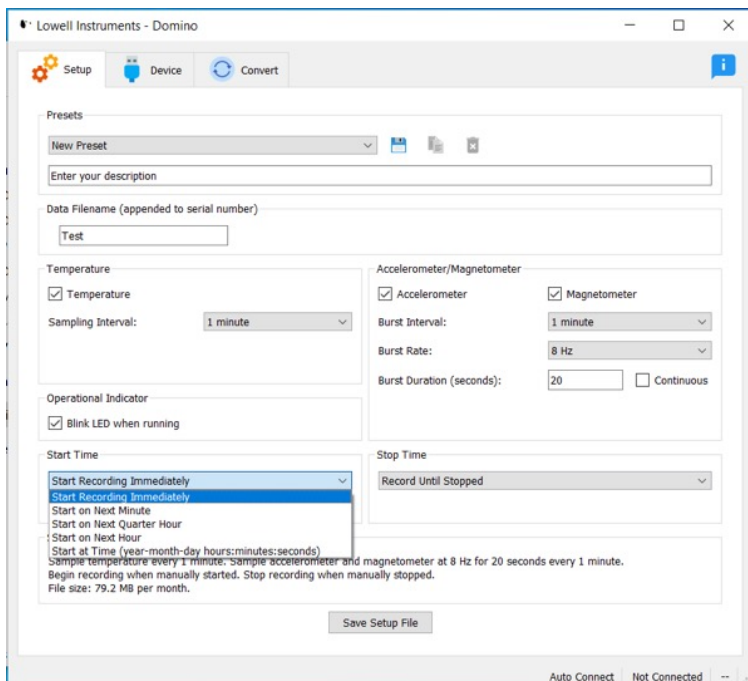
Domino will give a summary of each of the new presets shown below, also there will be a full description in our documentation.

- Typical – Current Meter
- Swells – Current Meter
- Energetic/Turbulence – Current Meter
- Continuous Recording – General Logging



### Start Options

Many of our users use the Start at a Time option where you have to adjust the date and time manually. The new start options will set the delay to start at the top of the next minute, the next quarter hour (00, 15, 30, 45) or the top of the next hour. This feature is useful when you need to synchronize data from multiple meters.



### Start Options

- Start Recording Immediately
- Start on Next Minute
- Start on Next Quarter Hour
- Start on Next Hour
- Start at Time (YY-MM-DD hh:mm:ss)

## [Lowell Instruments Distributors](#)

We encourage you to shop local when possible. Our list of distributors continues to grow worldwide.

**Canada**

Hoskin Scientific Ltd

[www.hoskin.ca](http://www.hoskin.ca)**Australia**

OneTemp

[www.onetemp.au](http://www.onetemp.au)**New Zealand**

Scottech

[www.scottech.net](http://www.scottech.net)**Netherlands**

Veldshop.nl

[www.veldshop.nl](http://www.veldshop.nl)**Hong Kong (China)**

DIANJIANG GROUP LIMITED

[www.dianjiangtech.com.cn](http://www.dianjiangtech.com.cn)**United Kingdom**

TempCon

[www.tempcon.co.uk](http://www.tempcon.co.uk)**China**

Shanghai P-Nav Scientific

[www.p-nav.com.cn](http://www.p-nav.com.cn)

## Battery Replacements

Have you replaced batteries on your current meters recently? Generally, our lithium batteries last one year but should be checked and replaced if needed before a new field season deployment. It's easy to replace them with a [battery replacement tool kit](#) or [replacement batteries](#). [Contact us](#) for pricing and availability.

## Happy Holidays from Lowell Instruments!

From our team to yours - we wish you a happy, healthy and safe holiday season!

We are looking forward to working with you in 2022!



Scott, Jeff, Nick, Joaquim & Domino

Lowell Instruments is committed to creating tools and solutions to help you with your research. We want to hear from loyal customers like you. **Follow us on Twitter at [@Lowell\\_Inst](#) or [Facebook](#) and let us know what you think about our products** and customized support. We created this newsletter so that our customers can stay informed about the latest updates from Lowell Instruments. We plan to send out quarterly updates. If you wish to opt out you may [unsubscribe](#) at any time. Thank you for reading!

Thanks,

Nick Lowell, Founder & President



Facebook



Twitter



LinkedIn



Website

*Copyright © 2020 LOWELL INSTRUMENTS LLC, All rights reserved.*

**Our mailing address is:**

info@lowellinstruments.com

Want to change how you receive these emails?

You can [update your preferences](#) or [unsubscribe from this list](#).

This email was sent to <<Email Address>>

[why did I get this?](#) [unsubscribe from this list](#) [update subscription preferences](#)  
Lowell Instruments, LLC · 82 Technology Park Dr · East Falmouth, MA 02536 · USA

[Subscribe](#)

[Past Issues](#)

[Translate](#) ▼

[RSS](#)

